



U-Blue

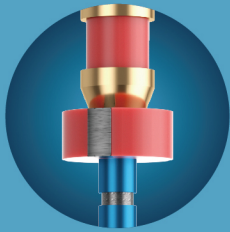
Ultra - Safe Endo

NIC[®]

For Better Endo

U-Blue

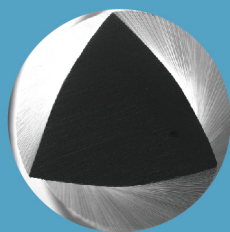
Ultra - Safe Endo



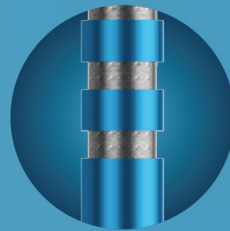
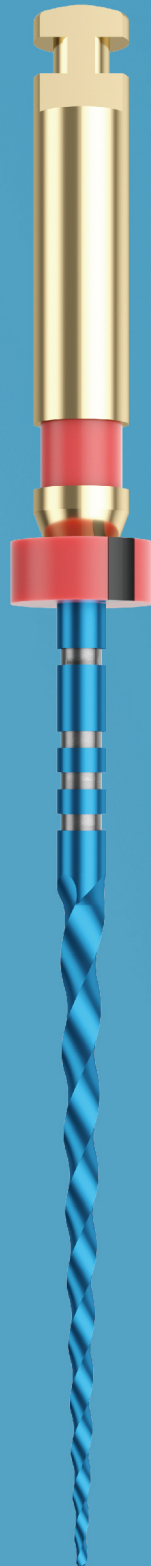
Radiopaque stopper



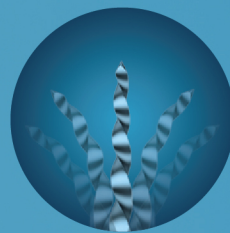
Continuous rotation



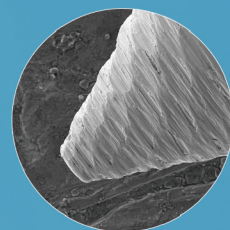
Convex triangle



Precise depth marking



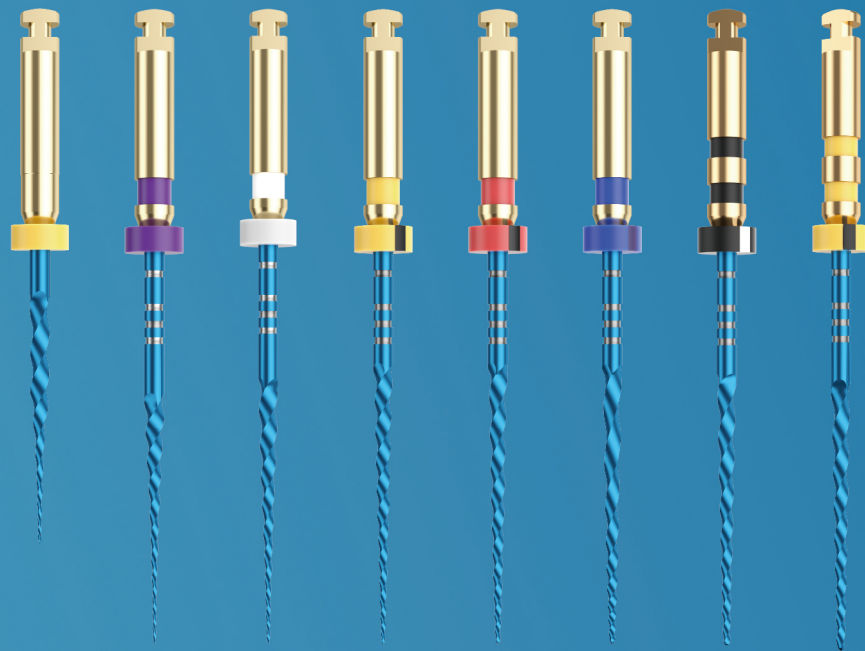
R-phase NiTi



Safe guiding tip

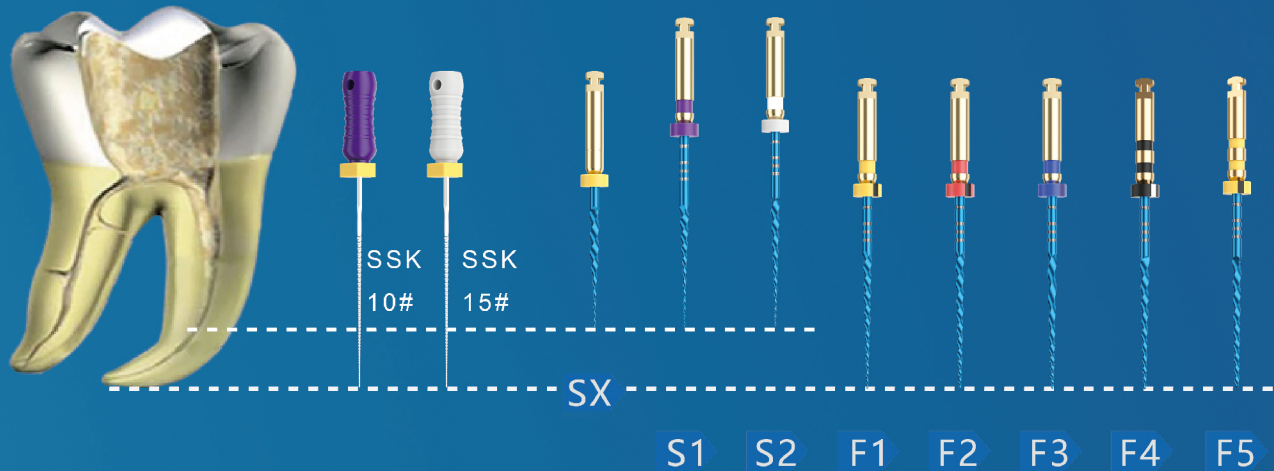
Features

- MaxTech 6.0 NiTi alloy
- Triangular cross section design
- Variable taper design to have accurate shaping
- More flexibility and maintain the same cutting ability
- High fracture resistance
- Ultra-Safe sequence



U-Blue	SX	S1	S2	F1	F2	F3	F4	F5
Size	19/.04	18/.02	20/.04	20/.07	25/.06	30/.09	40/.06	50/.05
Speed(RPM)	400	400	400	400	400	400	400	400
Torque(N.CM)	3.0	3.0	3.0	3.0	3.0	3.0	3.0	3.0
GP				F1	F2	F3	F4	F5

Sequence



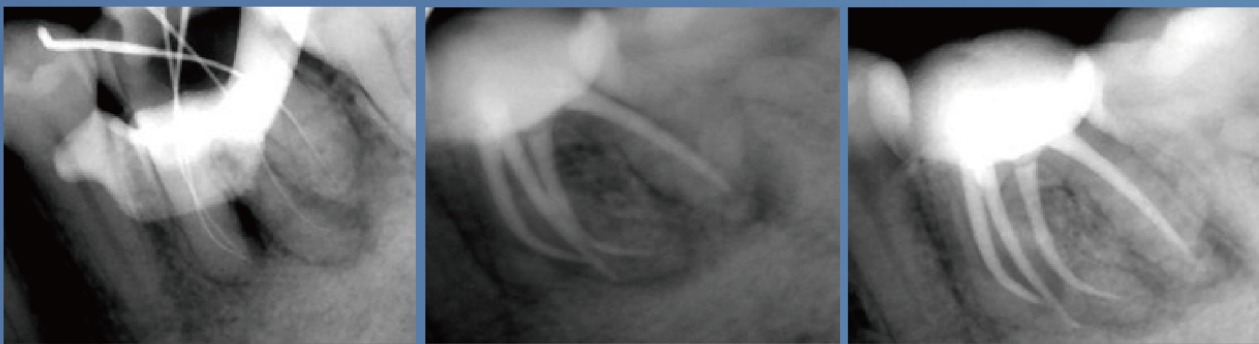
- 1 Scout the canal with SS K #10
- 2 Explore the canal with SS K #15
- 3 Use SX to expand the canal orifice
- 4 Scout coronal 2/3 & shaping this part with S1, S2
- 5 Scout apical 1/3 & follow S1, S2 until working length
- 6 Finish the apical 1/3 with F1, F2
- 7 F4, F5 followed when needed

References



Size	19mm	21 mm	25 mm	31 mm
SX	BFU 019 0SX			
S1		BFU 021 0S1	BFU 025 0S1	BFU 031 0S1
S2		BFU 021 0S2	BFU 025 0S2	BFU 031 0S2
F1		BFU 021 0F1	BFU 025 0F1	BFU 031 0F1
F2		BFU 021 0F2	BFU 025 0F2	BFU 031 0F2
F3		BFU 021 0F3	BFU 025 0F3	BFU 031 0F3
F4		BFU 021 0F4	BFU 025 0F4	BFU 031 0F4
F5		BFU 021 0F5	BFU 025 0F5	BFU 031 0F5
SX-F3		BFU 021 A01	BFU 025 A01	BFU 031 A01

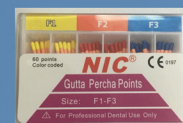
Clinic Cases



Endo Motor & Obturation



Model	Ref.No
● F1	PPU 029 0F1
● F2	PPU 029 0F2
● F3	PPU 029 0F3
● F4	PPU 029 0F4
● F5	PPU 029 0F5
F1-F3	PPU 029 A01



Model	Ref.No
● F1	GPU 029 0F1
● F2	GPU 029 0F2
● F3	GPU 029 0F3
● F4	GPU 029 0F4
● F5	GPU 029 0F5
F1-F3	GPU 029 A01

Premium manufacturer
since 2002

SUPERLINE



SHENZHEN SUPERLINE TECHNOLOGY CO., LTD.

ISO 13485:2016 CE 197 FDA

www.supline.com